

Couplings



4

COUPLINGS

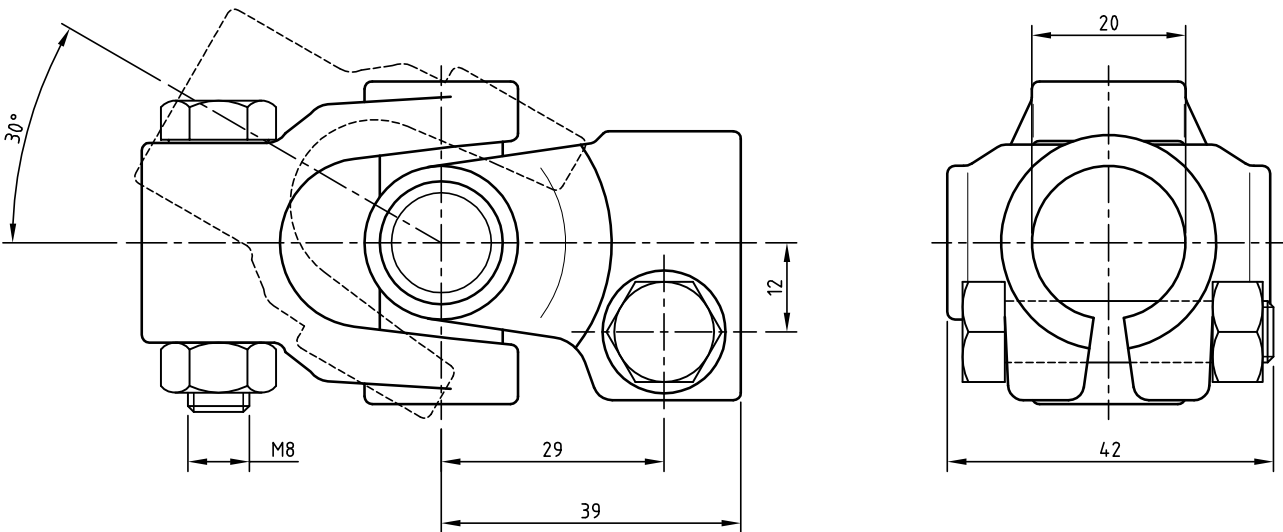
4.2

UNIVERSAL JOINT



The universal joint transmits the torque between shafts that are at a maximum angle of 30° in relation to each other.

The universal joint can be attached to a telescopic arm, THG30 distribution box or, by means of a weld joint, to a 1" drive tube.

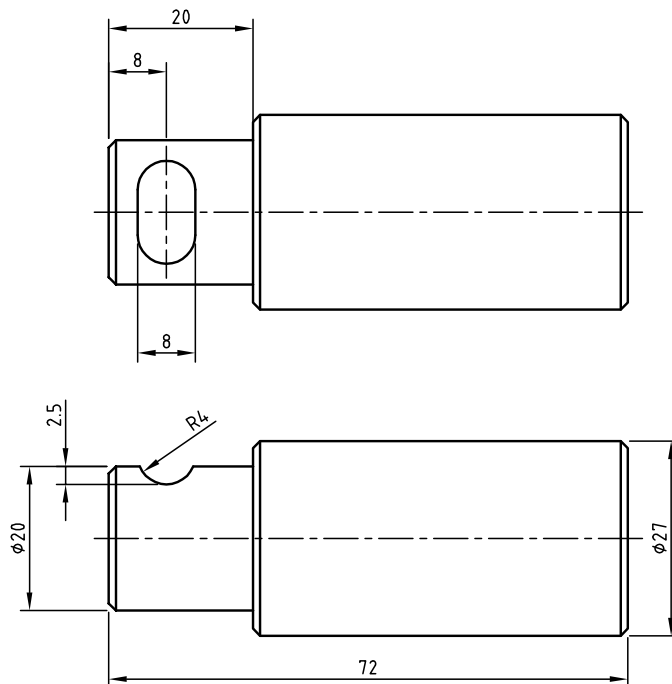


Description	T [Nm]	m [g]	Article number
Universal joint	120	325	P.KRK.D20

The weld joint is used to connect a system's drive tube with a universal joint.

The 1" weld joint is welded into the 1" drive tube.

Other sizes are available on request.



Description	m [g]	Article number
Weld joint 1"	280	P.LT100

4

COUPLINGS

4.4

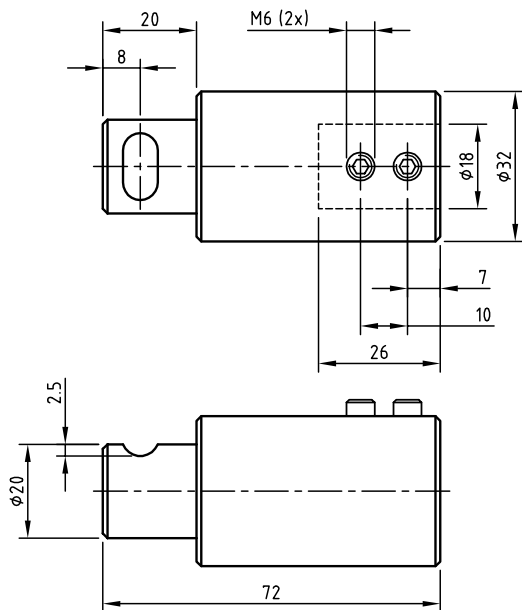
COUPLING PIECE TSP40



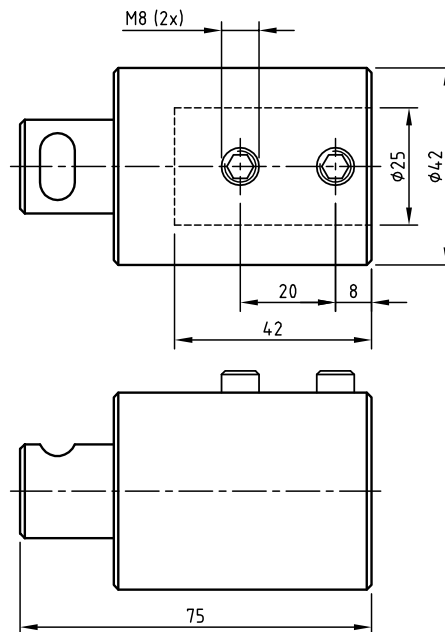
The coupling piece connects the drive shaft of the GW10 motor gearbox with the TSP40 telescopic arm.

The galvanised coupling piece has to be secured with 2 set screws in the keyway of the drive shaft of the motor gearbox.

P.KS.TSP.D20.D18



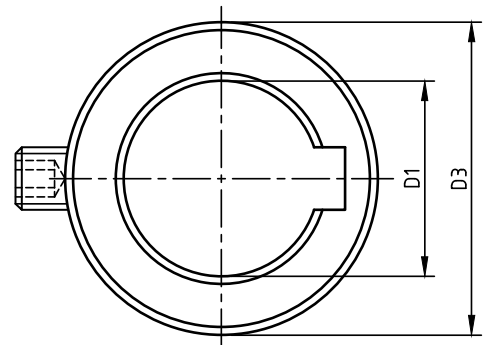
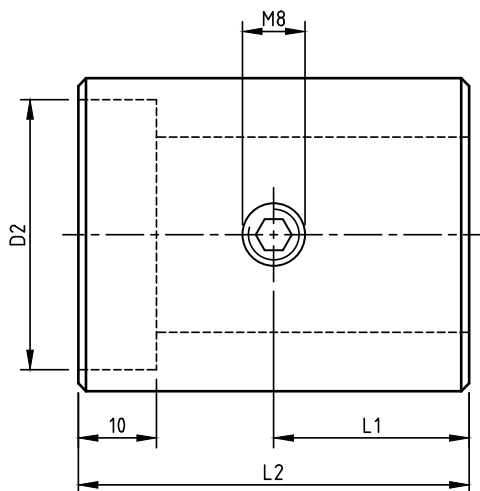
P.KS.TSP.D20.D25



Description	m [g]	Article number
Coupling piece TSP40 - GW10	220	P.KS.TSP.D20.D18
Coupling piece TSP40 - GW30	470	P.KS.TSP.D20.D25

The bush joint connects the driven shaft of the GW motor gearbox or a GWK240 worm gearbox with the drive tube of a ventilation or screen system. The bush joint is only recommended when there is not enough space for a chain coupling set, and only if the drive shafts are perfectly aligned.

The bush joint is available for 1" or 5/4" drive tubes. The hole for the connection with the driven shaft of the motor gearbox or worm gearbox has a diameter of $\varnothing 18$ mm or $\varnothing 25$ mm, depending on the type. The bush joint is secured to the shaft by means of an M8x12 set screw.



Description	Db [-]	D1 [mm]	L1 [mm]	D2 [mm]	L2 [mm]	D3 [mm]	m [kg]	Article number
Bush joint 1" - GW10	1"	18	15	34,5	40	40	0,20	PLBS100.D18
Bush joint 5/4" - GW10	5/4"	18	15	43,5	40	50	0,37	PLBS125.D18
Bush joint 1" - GW30/GW40/GW80/GWK	1"	25	25	34,5	50	40	0,25	PLBS100.D25
Bush joint 5/4" - GW30/GW40/GW80/GWK	5/4"	25	25	43,5	50	50	0,46	PLBS125.D25

4

COUPLINGS

4.6

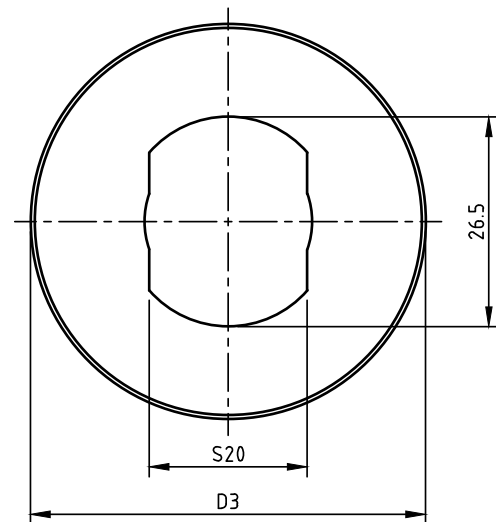
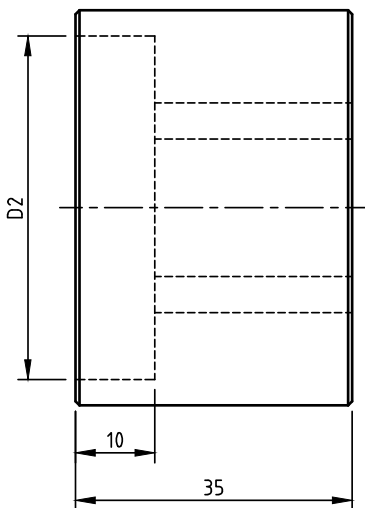
SLEEVE JOINT COUPLING



The sleeve joint coupling connects the entry shaft of a rack box or gearbox with the drive tube of a ventilation or screen system.

The sleeve joint coupling is available for 1" or 5/4" drive tubes. The hole for the connection with the rack box is suited for a flat ends shaft with a jaw opening of 20 mm.

Sleeve joint couplings for 5/4" prefab shafts are also available.

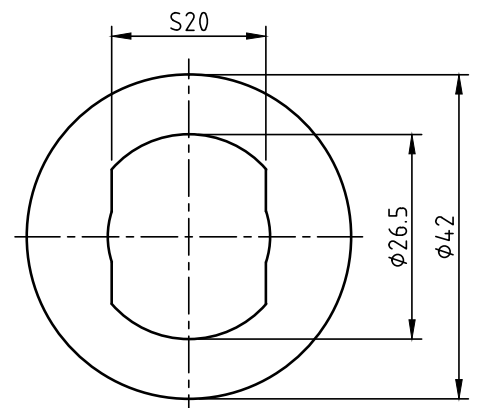
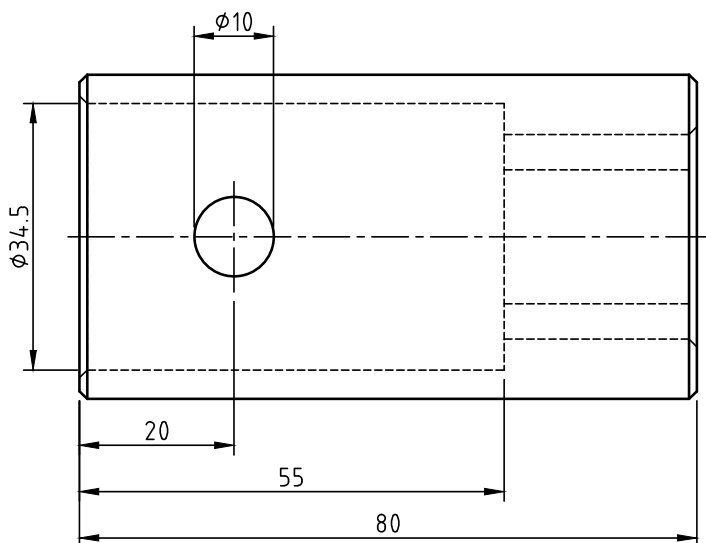


Description	Db [-]	Da [mm]	m [g]	Article number
1" sleeve joint coupling - THG	1"	40	200	P.SLK100
5/4" sleeve joint coupling - THG	5/4"	50	350	P.SLK125

The sleeve bolt coupling connects the entry shaft of a rack box or gearbox with the drive tube of a ventilation or screen system.

The sleeve bolt coupling is attached with a M10 bolt to a 1" drive tube. The hole for the connection with the rack box is a flattened ends S20.

Couplings with different lengths or connections or for a different tube dimension are available on request.



Description	m [g]	Article number
Sleeve bolt coupling 1" S20	235	P.SBK100.S20

4

COUPLINGS

4.8

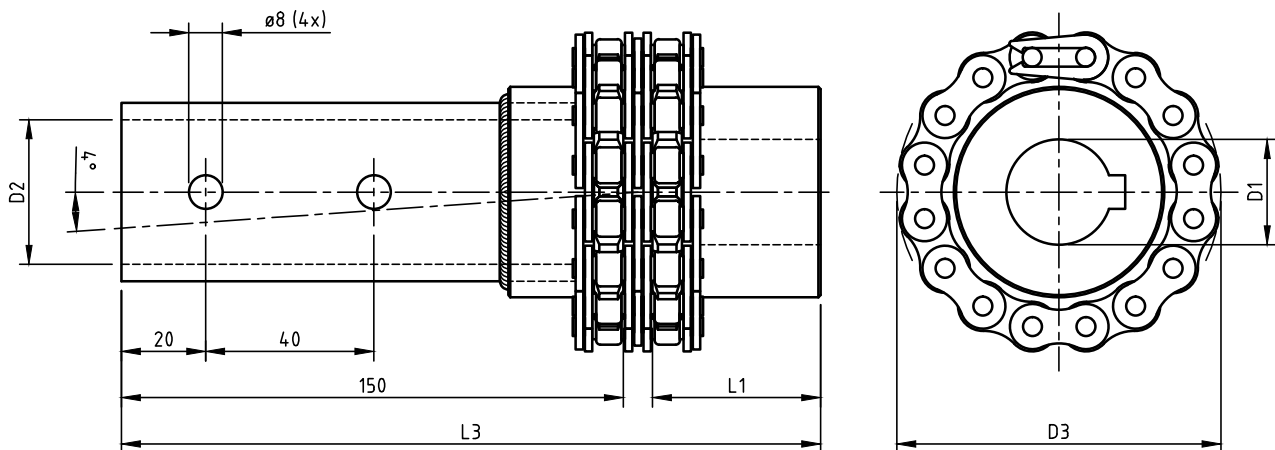
TUBE-BOLT CHAIN COUPLING



The tube-bolt chain coupling set, with a duplex chain according to DIN chain number 08B-2 ($p = 1/2''$) or 10B-2 ($p = 5/8''$) with 16 links (including connecting link), connects the drive shaft of the GW gearbox to the 1" or 5/4" drive tube of the system.

The set consists of a sprocket wheel with 16 teeth, a chain with connecting link and a tube-bolt-sprocket wheel.

Small differences in angle or alignment can be corrected with the tube-bolt chain coupling set.

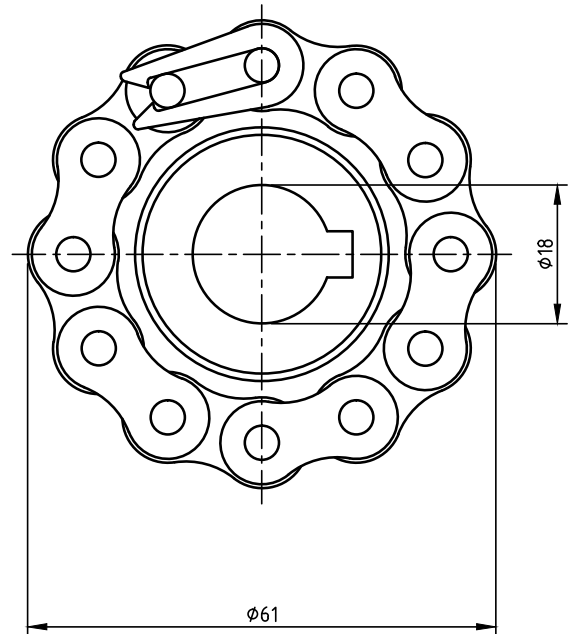
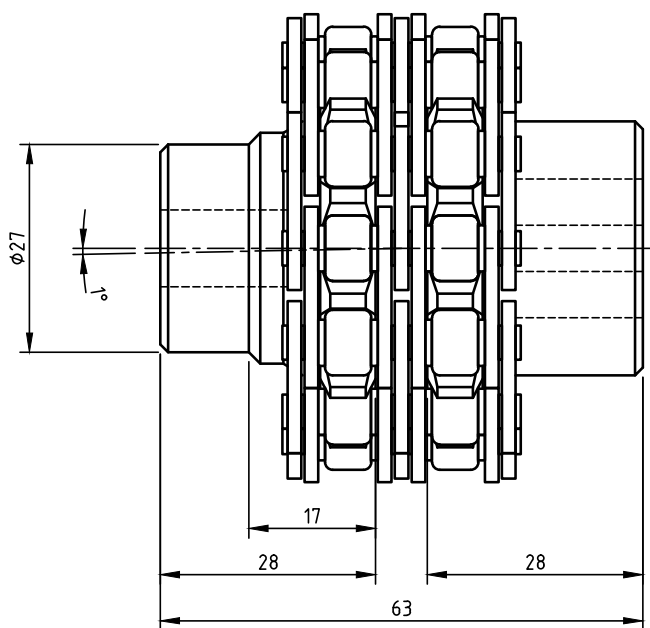


Description	T [Nm]	Db [-]	D1 [mm]	L1 [mm]	D2 [mm]	D3 [mm]	L3 [mm]	A [°]	m [kg]	Article number
TBCC-set 08B - GW10 (z12)	120	35,0	18	28	1"	60	185	1	0,85	P.BBKK08B.D18.D100.Z12
TBCC-set 08B - GW10	240	35,0	18	28	1"	77	185	4	1,60	P.BBKK08B.D18.D100
TBCC-set 08B - GW10	240	43,1	18	28	5/4"	77	185	4	1,55	P.BBKK08B.D18.D125
TBCC-set 08B - GW(K)	240	35,0	25	40	1"	77	197	4	1,90	P.BBKK08B.D25.D100
TBCC-set 08B - GW(K)	240	43,1	25	40	5/4"	77	197	4	1,85	P.BBKK08B.D25.D125
TBCC-set 10B - GW10	420	35,0	18	29	1"	96	186	4	1,60	P.BBKK10B.D18.D100
TBCC-set 10B - GW10	420	43,1	18	29	5/4"	96	186	4	1,55	P.BBKK10B.D18.D125
TBCC-set 10B - GW(K)	420	35,0	25	40	1"	96	198	4	1,90	P.BBKK10B.D25.D100
TBCC-set 10B - GW(K)	420	43,1	25	40	5/4"	96	198	4	1,85	P.BBKK10B.D25.D125

The chain coupling set, with a duplex chain according to DIN chain no. 08B-2 with 12 links (including connecting link), connects the drive shaft of the GW motor gearbox with the system's drive tube.

The set consists of a sprocket wheel with 12 teeth, a chain ($p = 1/2''$) with a link joint and a weld sprocket wheel. The sprocket wheel ($1/2'' \times 5/16''$) is suitable for the GW10. The weld sprocket wheel is suitable for a 1'' drive tube.

Small differences in angle or alignment can be corrected with this chain coupling set.



Description	T [Nm]	A [°]	m [kg]	Article number
CC set 08B - GW10	120	1	1,0	P.KK08B.Z12.D18.D100

4

COUPLINGS



4.10

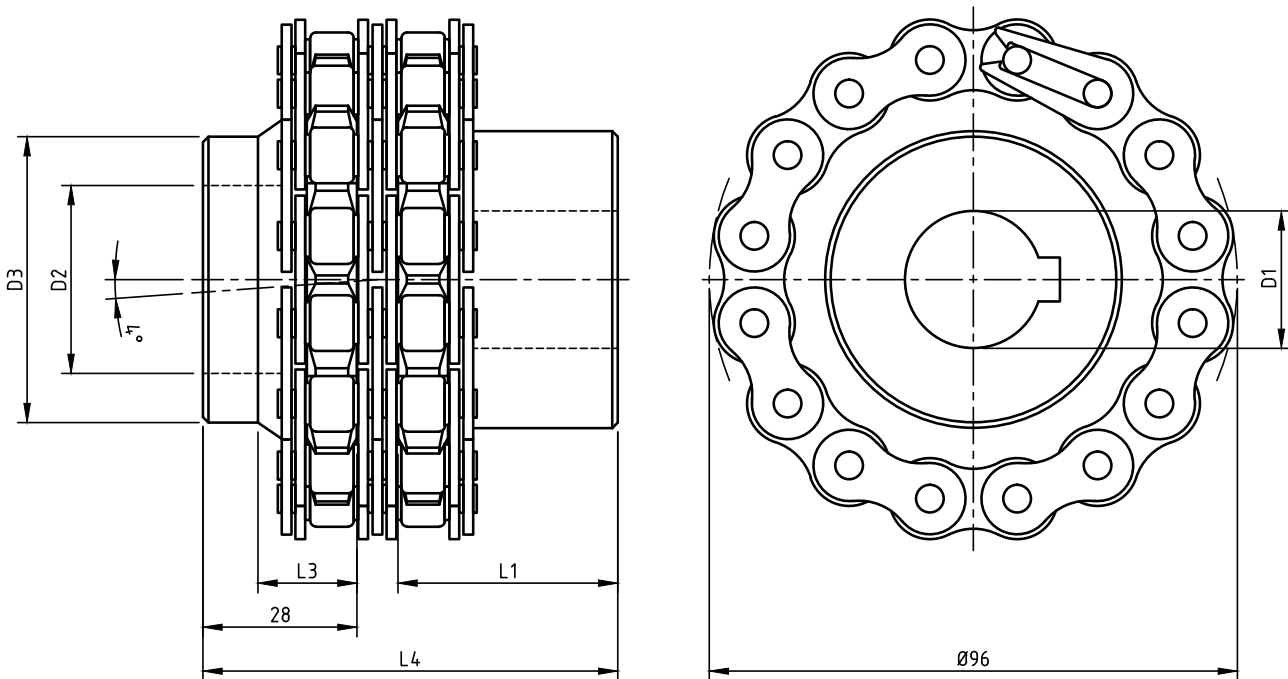
CHAIN COUPLING 10B Z16



The chain coupling set, with a duplex chain according to DIN chain no. 10B-2 with 16 links (including connecting link) connects the drive shaft of the GW motor gearbox with the system's drive tube.

The set consists of a sprocket wheel with 16 teeth, a chain ($p = 5/8''$) with a connecting link and a weld sprocket wheel. The sprocket wheel ($5/8'' \times 3/8''$) is suitable for the GW10, GW30, GW40 and GW80. The weld sprocket wheel is available for 1'', 5/4'' or 2'' drive tubes.

Small differences in angle or alignment can be corrected with this chain coupling set.

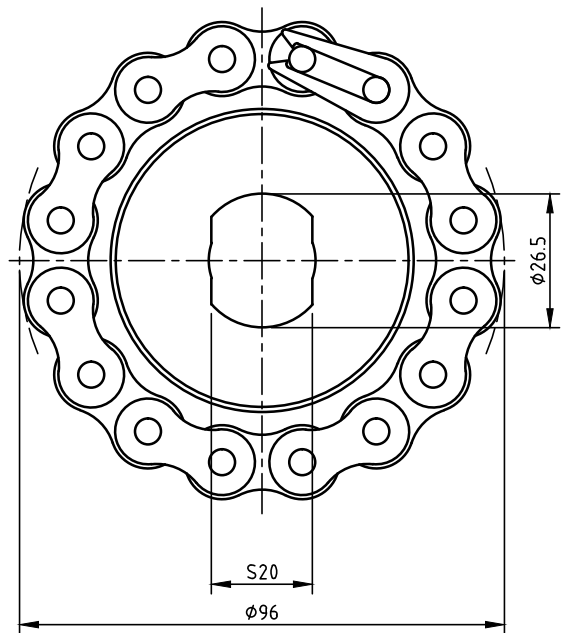
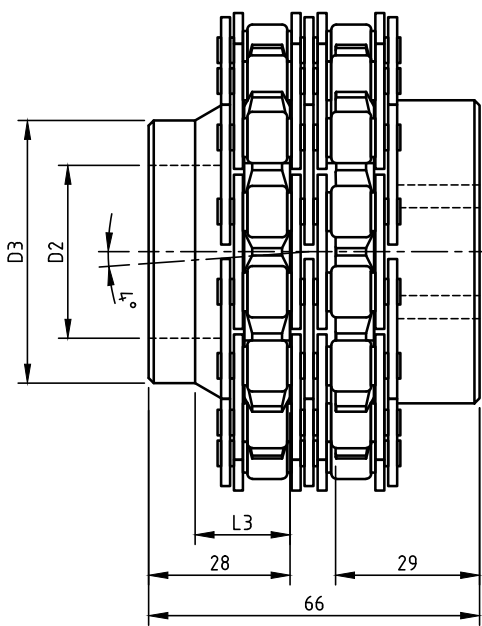


Description	T [Nm]	Db [-]	D1 [mm]	L1 [mm]	D2 [mm]	D3 [mm]	L3 [mm]	L4 [mm]	A [°]	m [kg]	Article number
CC-set 10B - GW10	420	1''	18	29	34,2	60	-	66	4	1,2	P.KK10B.Z16.D18.D100
CC-set 10B - GW10	420	5/4''	18	29	43,2	60	-	66	4	1,2	P.KK10B.Z16.D18.D125
CC-set 10B - GW10	420	2''	18	29	12,0	52	18	66	4	1,2	P.KK10B.Z16.D18.D200
CC-set 10B - GW	420	1''	25	40	34,2	60	-	77	4	1,5	P.KK10B.Z16.D25.D100
CC-set 10B - GW	420	5/4''	25	40	43,2	60	-	77	4	1,5	P.KK10B.Z16.D25.D125
CC-set 10B - GW	420	2''	25	40	12,0	52	18	77	4	1,5	P.KK10B.Z16.D25.D200

The chain coupling set, with a duplex chain according to DIN chain no. 10B-2 with 16 links (including connecting link) connects the system's drive tube with the THG rack box.

The set consists of a sprocket wheel with 16 teeth, a chain ($p = 5/8''$) with a connecting link and a weld sprocket wheel. The sprocket wheel ($5/8'' \times 3/8''$) is suitable for the THG rack box with flattened ends shafts. The weld sprocket wheel is available for 1'', $5/4''$ or 2'' drive tubes.

Small differences in angle or alignment can be corrected with the chain coupling set.



Description	T [Nm]	Db [-]	D2 [mm]	D3 [mm]	L3 [mm]	A [°]	m [kg]	Article number
CC set 10B - THG	420	1''	34,2	60	-	4	1,2	P.KK10B.Z16.S20.D100
CC set 10B - THG	420	$5/4''$	43,2	60	-	4	1,2	P.KK10B.Z16.S20.D125
CC set 10B - THG	420	2''	12,0	52	18	4	1,2	P.KK10B.Z16.S20.D200

4

COUPLINGS



4.12

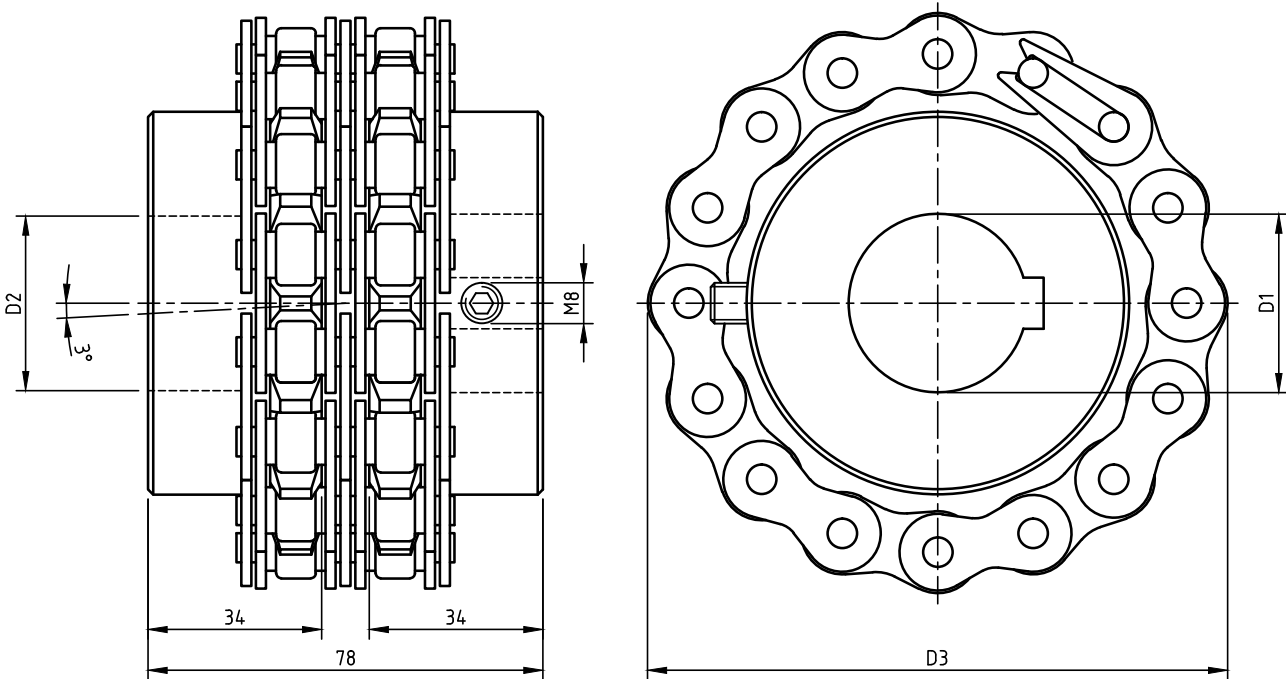
CHAIN COUPLING 12B



The chain coupling set, with a duplex chain according to DIN chain no. 12B-2 with 16 or 18 links (including connecting link) connects the system's drive tube with the GW motor gearbox.

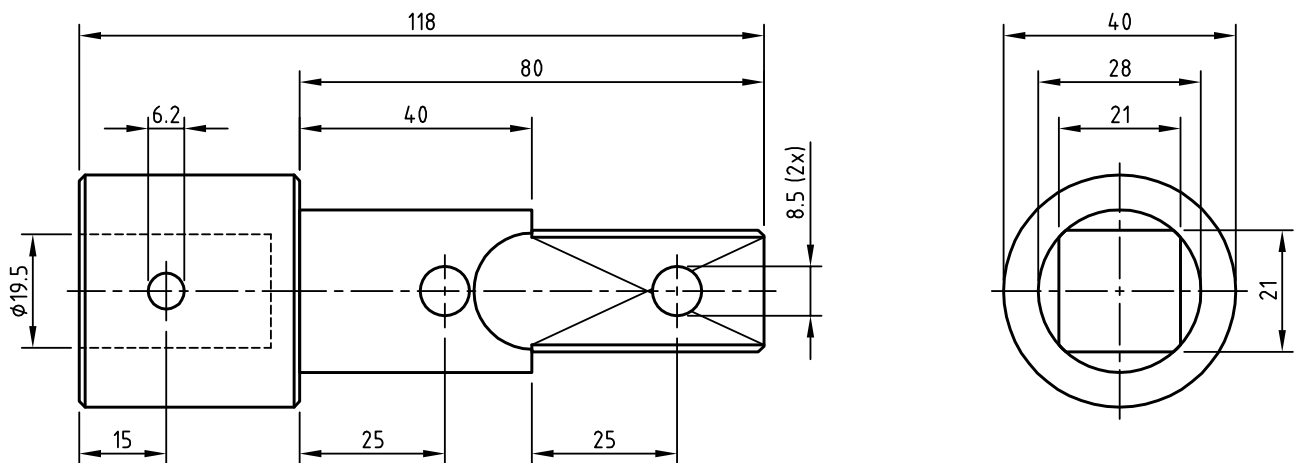
The set consists of a sprocket wheel with 16 or 18 teeth, a chain ($p = 3/4''$) with a connecting link and a weld sprocket wheel. The sprocket wheel ($3/4'' \times 7/16''$) is suitable for the GW125, GW110S or GW150S gearboxes. The weld sprocket wheel is available for 1'', 5/4'' or 2'' drive tubes.

Small differences in angle or alignment can be corrected with the chain coupling set.



Description	T [Nm]	D1 [-]	D2 [-]	D3 [-]	A [°]	z [-]	m [kg]	Article number
CC-set 12B - GW125	675	35	1''	114	3	16	2,8	P.KK12B.Z16.D35.D100
CC-set 12B - GW125	675	35	5/4''	114	3	16	2,8	P.KK12B.Z16.D35.D125
CC-set 12B - GW125	675	35	2''	114	3	16	2,8	P.KK12B.Z16.D35.D200
CC-set 12B - GW150	760	38	1''	126	3	18	3,6	P.KK12B.Z18.D38.D100
CC-set 12B - GW150	760	38	5/4''	126	3	18	3,6	P.KK12B.Z18.D38.D125
CC-set 12B - GW150	760	38	2''	126	3	18	3,6	P.KK12B.Z18.D38.D200

The bush coupling connects the roll tube to the GXP10. The galvanised bush coupling is suited for a roll tube Ø32 and □25.



Description	m [kg]	Article number
Bush coupling GXP10 - tube Ø32x1.5	0,6	P.KBS32.01.D19

4

COUPLINGS



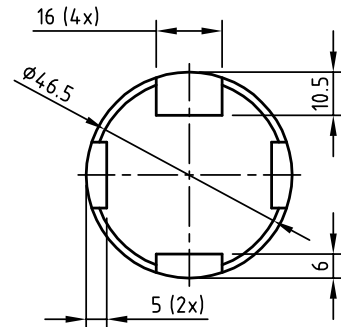
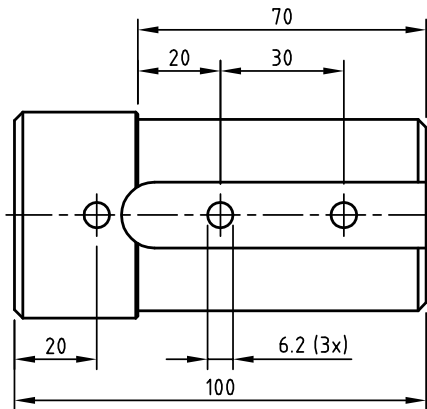
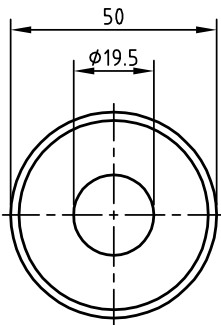
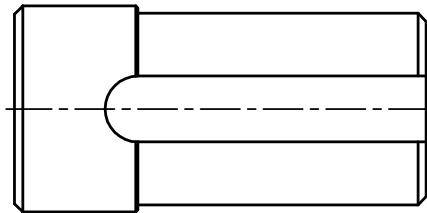
4.14

COUPLING GXP10 TUBE Ø50



The coupling connects the roll tube with the GXP10. The aluminium coupling is suited for all common single groove Ø50 roll tubes.

Bush couplings for GW's, couplings with different lengths or couplings for customer specific roll tubes are available on request.

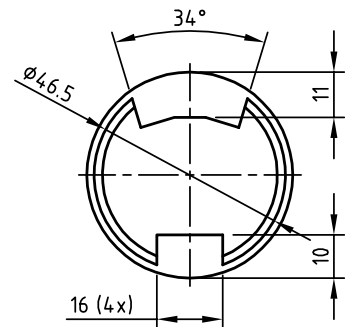
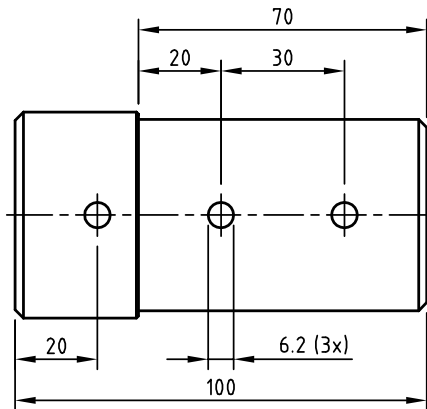
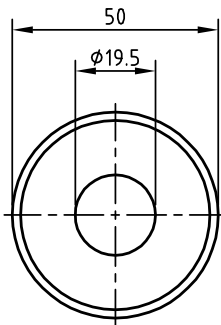
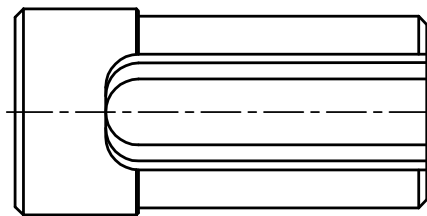


Description	m [kg]	Article number
Coupling GXP10 - tube Ø50 single groove	0,4	P.KBS50.01.D19

COUPLING GXP10 TUBE Ø50 TWIN

The bush coupling connects the roll tube with the GXP10. The aluminium coupling is suited for all common double groove Ø50 mm roll tubes.

Couplings for GW's, couplings with different lengths or couplings for customer specific roll tubes are available on request.



Description	m [kg]	Article number
Coupling GXP10 - tube Ø50 double groove	0,4	P.KBS50.02.D19

